

Resilience Breeding for Food Security

sigrid.heuer@rothamsted.ac.uk





Favorable versus unfavorable production systems

Irrigated - favorable

- ~**60%** of total rice area Asia (80 M ha*)
- ~ **70%** of rice production
- constant water control
- high fertilizer inputs
- weed control (by flooding and herbicides)
- favorable conditions



Rainfed – stress prone

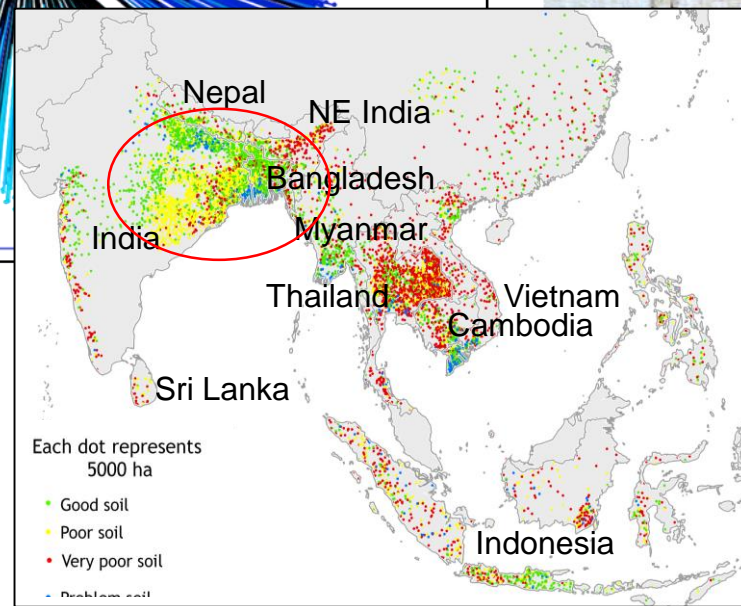
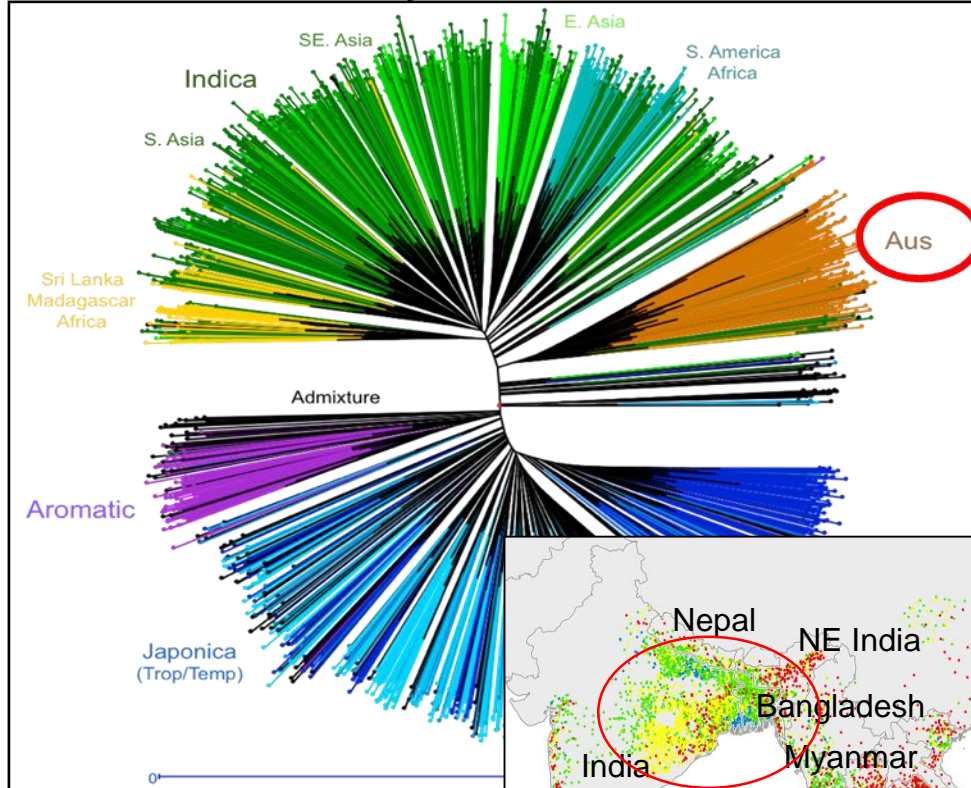
- ~**40%** of total rice area Asia (60 M ha*)
- ~ **25%** of rice production
- no or little water control
- low to very low fertilizer inputs
- weed control difficult and labor intensive
- Often unfavorable conditions

*Dawe et al 2010



Exploring genetic diversity for stress tolerance genes

SNP marker survey



Ken McNally et al, IRRI/GCP

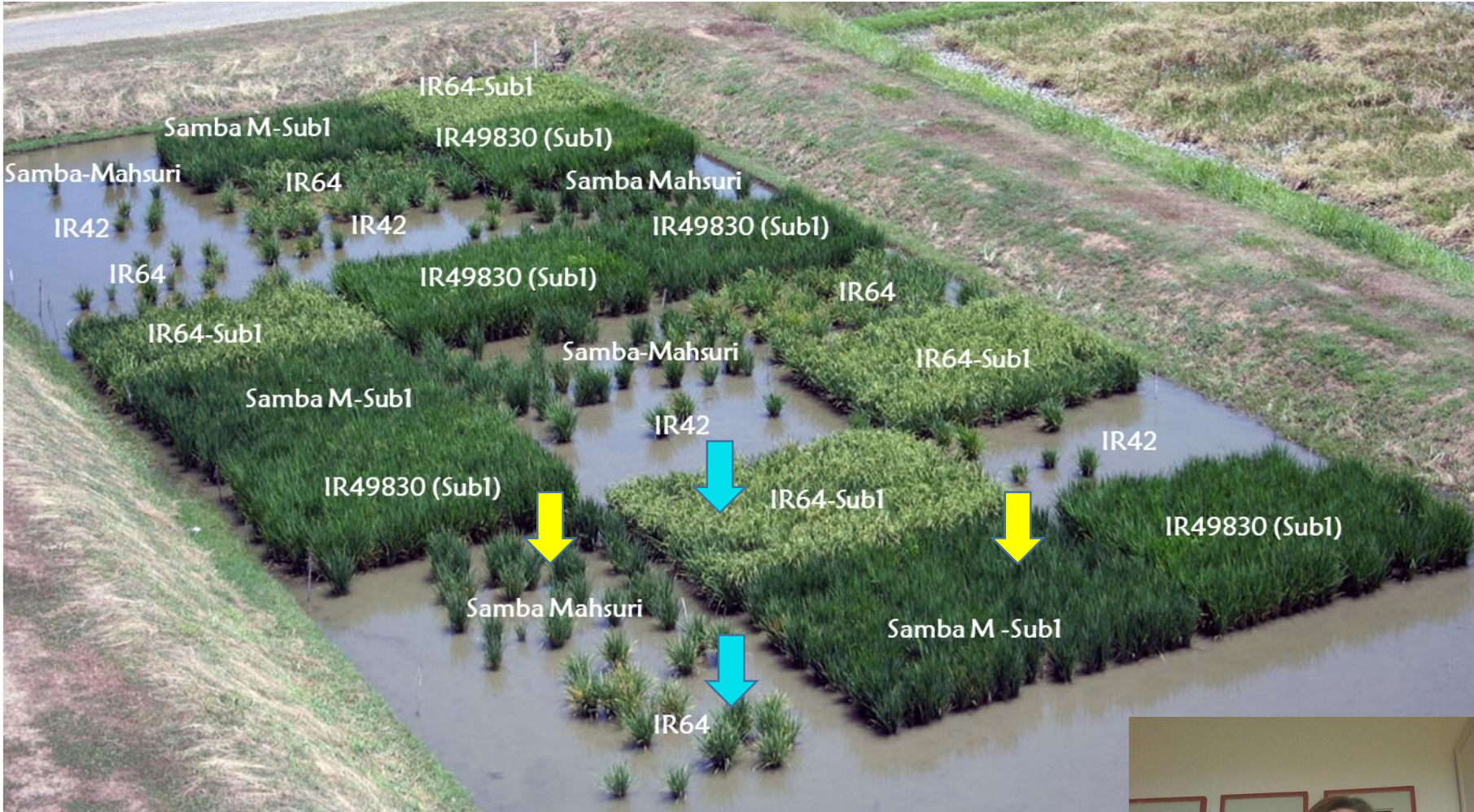
Adapted from Haefele and Hijmans 2009



Sigrid Heuer



SUB1A - a single gene confers submergence tolerance



Recovery of Sub1 rice varieties after 17 days of submergence

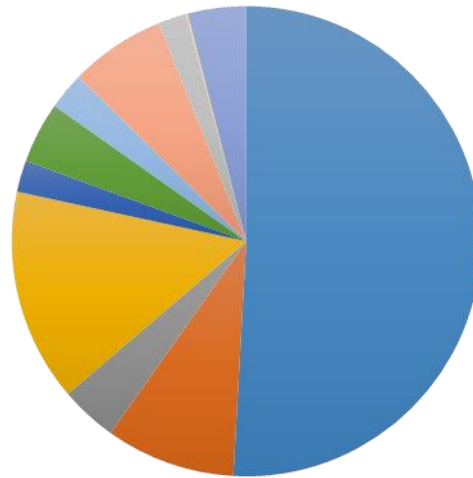


Wheat diversity panel (Uni Adelaide, Australia)



A Triticeae panel of 1018 accessions – including ~570 bread wheat accessions

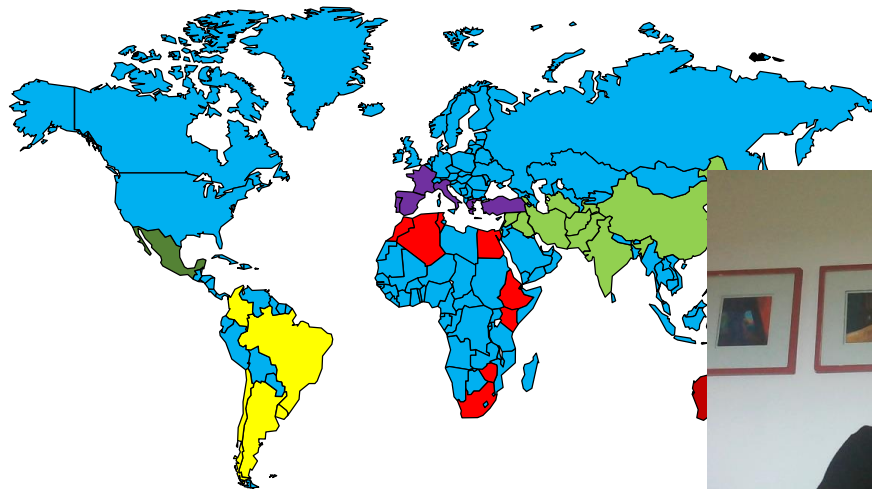
- *T. aestivum* varieties
- *T. aestivum* landraces
- Synthetic *T. aestivum*
- *T. turgidum durum*
- *T. urartu*
- *T. monococcum*
- *T. boeoticum*
- *T. turgidum dicoccum*
- *T. turgidum dicoccoides*
- Triticale



NAM population

75 donors x 2 Australian wheat (Gladius, Scout)

- imported into the UK
- phenotyping for H&D in India and other places



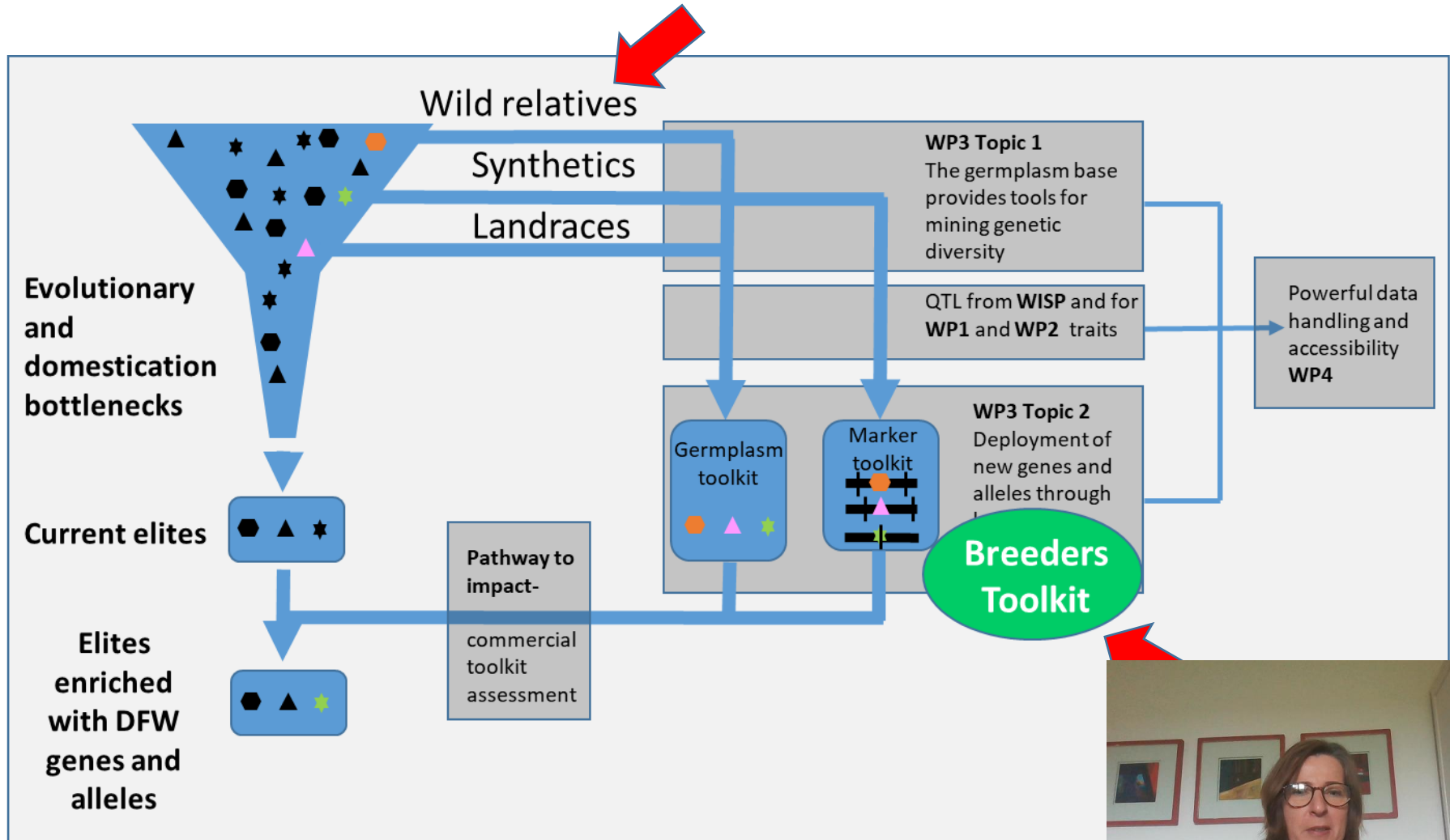
Designing Future Wheat (DFW): A multi-institute consortium 2017-2022



- Framework for the synergistic integration of BBSRC-funded ISP wheat activities



Overcoming the Domestication Bottleneck – DFW germplasm pipeline



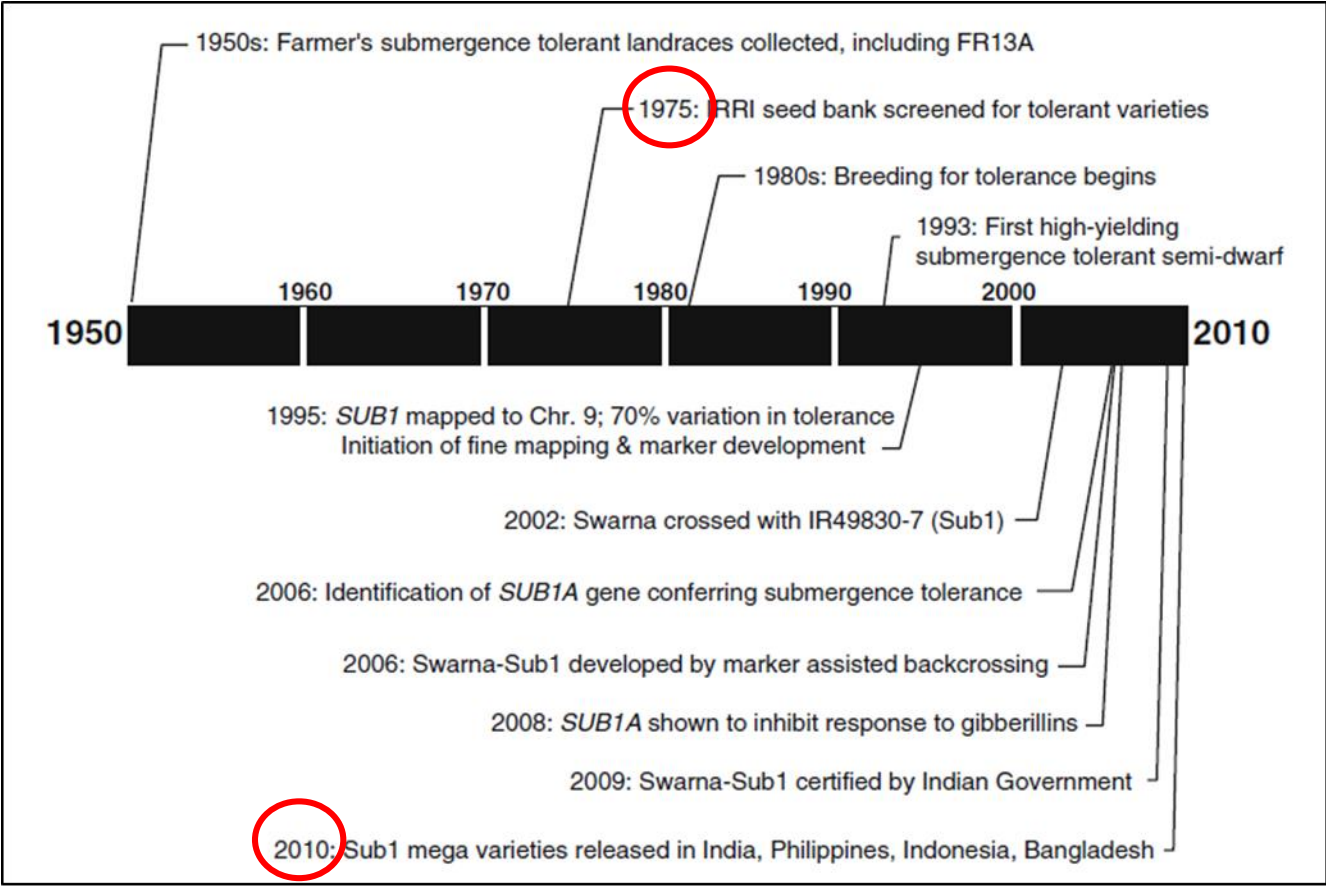
Landraces have valuable genes - but are low yielding



**Transfer trait of interest - restore desirable pl
(forward genetics, molecular breeding)**



A very long journey to success



IRRI
INTERNATIONAL RICE RESEARCH INSTITUTE

35 years !

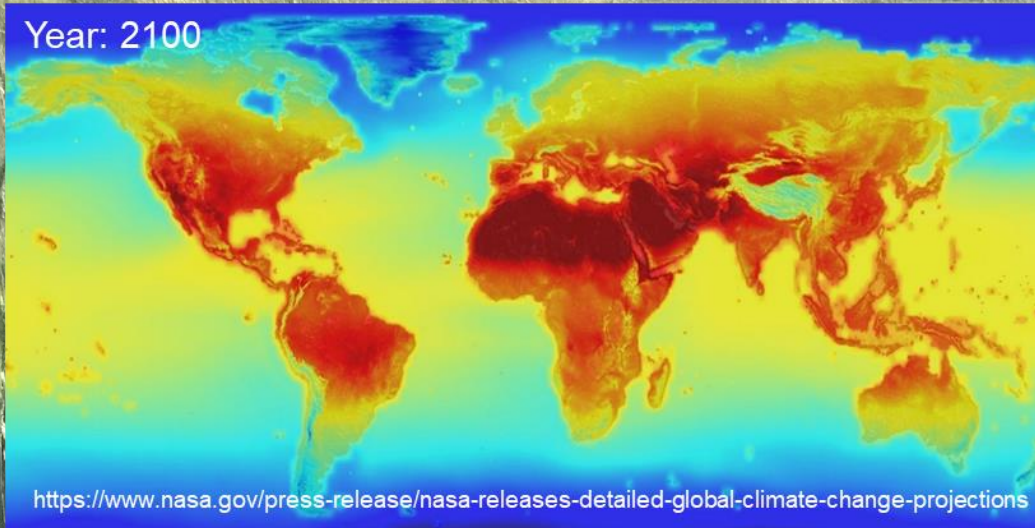
Bailey-Serres et al 2010 Rice DOI 10.1007/s12284-010-9048-5

We have to do better than that –



Genetic diversity programs for food security

Look into the future & invest in breeding and research today



Heat tolerant wheat



intolerant



Sigid Heuer

